

POS  
(cm)

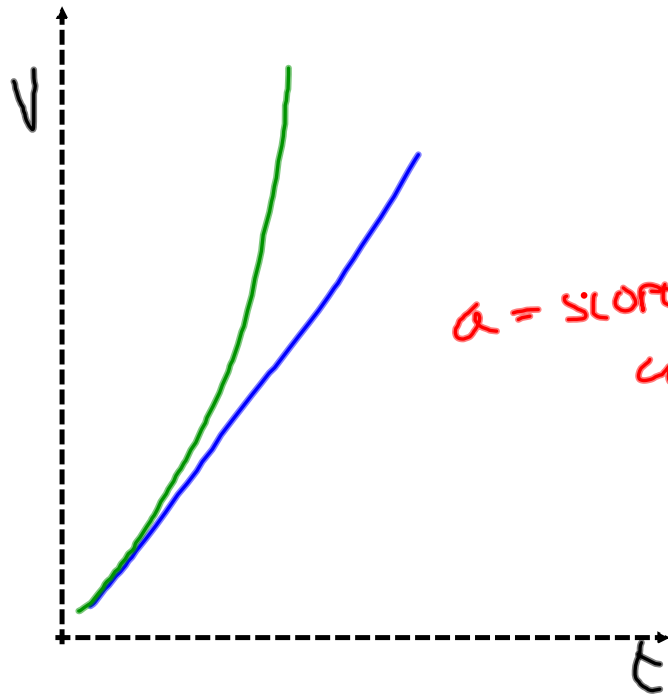
$$V_f - V_i = 4 \frac{m}{s}$$

$$\Delta V_f \quad 5 \frac{m}{s}$$

$$a = \frac{V_f - V_i}{\Delta t}$$

$$\Delta V_i = 1 \frac{m}{s}$$

t (s)



$a = \text{slope of } V \text{ vs } t$   
curve